

TECHNICAL INSTRUCTIONS

AERCO Serial Number & Code Plate Locations

This document provides instructions for finding the serial numbers and code plates on AERCO products.



Sample Benchmark Code Plate

Disclaimer

The information contained in these instructions are subject to change without notice from AERCO International, Inc. AERCO makes no warranty of any kind with respect to this material, including, but not limited to, implied warranties of merchantability and fitness for a particular application. AERCO International is not liable for errors appearing in this manual. Nor for incidental or consequential damages occurring in connection with the furnishing, performance, or use of this material.

Indirect - Fired Heaters



When facing the rear of the unit, the code plate is located near the top of the heat exchanger, within a cut-out portion of the insulation wrap.



Modulex Family of Boilers



The serial number and code plate information can be found on a sticker located at the top, right corner on the front panel of the unit. Remove the front panel to view the code plate.



KC1000 Boilers & Water Heaters



Remove the cap. When facing the rear of the unit, the code plate is located at the top of the insulation wrap.

The label on the front includes the unit's serial number.



Benchmark Family of Boilers

On all Benchmark boilers and Innovation water heaters, the serial number is included on the code plate, and on a sticker label somewhere inside the enclosure (the same number is on both). The sticker and code plate locations are described below.

It is generally easier to read the serial number off the sticker label. Find it on the code plate only if the sticker has become unreadable.



Benchmark 1.5 Low NOx Boiler

The serial number sticker is on the inside of the front door panel.

The code plate is located on the rear of the heat exchanger, and is visible below the rear panel.



Benchmark 2.0 Low NOx & Benchmark 2.0 Boiler

The serial number sticker is located on the inside of the front door, above the dimensional drawing.

The code plate is located on the lower right side of the heat exchanger, near the rear of the unit. It is visible from the rear of the unit, but is easier to see if the right side panel is removed.



Benchmark 3.0 Low NOx Boiler



The serial number sticker is located on the inside of the front door panel.

These units have two code plates, one on each heat exchanger:

FRONT Heat Exchanger

The code plate is at the front of the heat exchanger.

BACK Heat Exchanger

The code plate is at the rear of the heat exchanger. Note: Enclosure panels must be removed.



Benchmark 750/1000 Boiler

The serial number sticker is located on the inside of the front-left vertical frame.

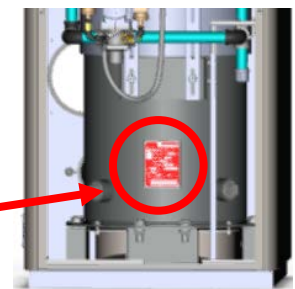
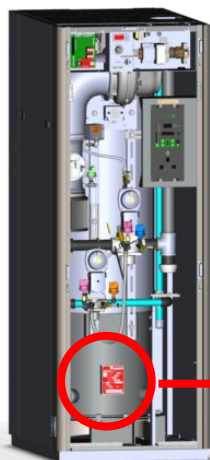
The code plate is located on front of the heat exchanger, near the bottom. Remove the front panel to view the code plate.

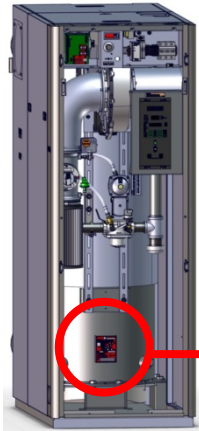


Benchmark 1500/2000 Boiler

The serial number sticker is located on the inside of the front-left vertical frame.

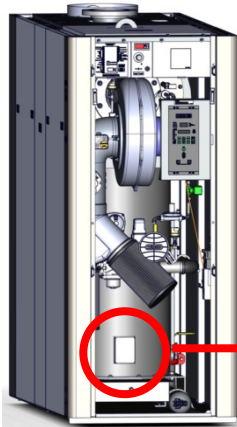
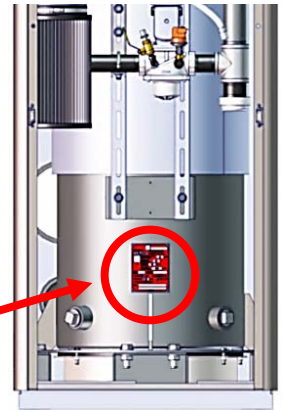
The code plate is located on front of the heat exchanger, near the bottom. Remove the front panel, as shown on the left, to view the code plate.



**Benchmark 2500/3000 Boiler**

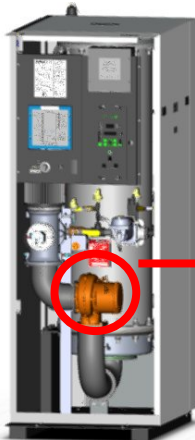
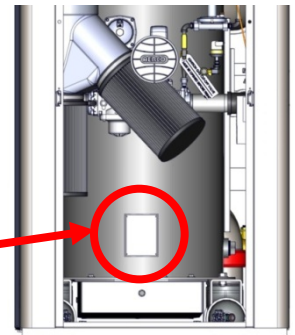
The serial number sticker is located on the inside of the front-left vertical frame.

The code plate is located on front of the heat exchanger nearer the bottom. Remove the front panel to view the code plate.

**Benchmark 6000 Boiler**

The serial number sticker is located on the inside of the front-left vertical frame.

The code plate is located on front of the heat exchanger, near the bottom. Remove the front panel to view the code plate. Note that, unlike the other Benchmark code plates, it is silver color, not red.

**Innovation Water Heaters**

The serial number sticker is located on the control panel, visible once the front panel is removed.

The code plate is located on front of the heat exchanger, below the gas train.

